

LEGEND

- EXISTING FIRE HYDRANT PER PREVIOUSLY APPROVED BACKBONE FIRE MASTER PLAN SR542339
- PROPOSED PUBLIC FIRE HYDRANT WITH BLUE REFLECTIVE FIRE HYDRANT MARKER. MARKER SHALL BE PLACED 6" FROM CENTERLINE OF STREET
- 4" MIN. UNIT ADDRESSING (SEE ARCHITECTURAL PLAN FOR FINAL DESIGN AND LOCATIONS)
- 300' HOSE PULL DISTANCE - FOR SINGLE FAMILY BUILDING TO THE FRONT DOOR
- PAINT CURB RED WITH 'NO PARKING FIRE LANE' STENCIL AT 30' O.C. PER DETAILS HEREON AND OCFA GUIDELINE B-01
- INDICATES FIRE LANE-NO PARKING SIGN PER DETAILS HEREON ON AND THE RFPFP
- WAYFINDING ADDRESS LOCATIONS (FINAL LOCATIONS BY OTHERS)
- PROPOSED FIRE ACCESS ROAD WITH ALL-WEATHER PAVED SURFACE DESIGNED, AT A MINIMUM, TO THE AASHTO H-20 STANDARD PER THE RFPFP
- EXISTING FIRE ACCESS ROAD
- NOT A PART OF FIRE ACCESS BUT DRIVE WILL BE CONSTRUCTED WITH ALL-WEATHER PAVED SURFACE DESIGNED, AT A MINIMUM, TO THE AASHTO H-20 STANDARD PER THE RFPFP
- INDICATES PROPOSED STRUCTURES MEETING THE 2022 CALIFORNIA RESIDENTIAL CODE SECTION R337
- INDICATES FIRE APPARATUS TURNING RADIUS: 20' WIDE PATH WITH 17' INSIDE AND 38' OUTSIDE

- ### CONSTRUCTION NOTES
- INSTALL FIRE HYDRANT MARKER THAT SHALL BE PLACED 6" FROM CENTERLINE OF STREET.
 - INSTALL RED PAINTED CURB PER DETAILS ON SHEET F-3.
 - INSTALL 'FIRE LANE-NO PARKING' SIGN PER DETAILS ON SHEET F-3.
 - INSTALL WAYFINDING ADDRESS SIGN WITH 3" MINIMUM FONT PER DETAIL ON SHEET F-3. APPROXIMATE LOCATIONS SHOWN; FINAL LOCATIONS BY OTHERS.



RANCH FIRE PROTECTION PROGRAM ATTACHMENTS

Ranch Fire Protection Program was approved by Orange County Fire Authority and Orange County Board of Supervisors dated: July 31, 2007 and Amendment No. 1, dated: March 25, 2013; Amendment No. 2, dated: August 14, 2014 and Amendment No. 3, dated: March 31, 2022.

Attachments used with this submittal:

- 3b Fire Lane No Parking Signs
- 3c Begin / End Fire Lane Signs
- 3g End of Fire Lane Identification
- 3h Way Finding Signage for Paseo Addresses
- 3i Mounting Specifications for Fire Lane Signs and No Parking Signs
- 3j Red Curb
- 6 a Street Widths
- 10 Hydrant Distribution Table
- 11 Fire Flow Requirement Table
- 12 a Fire Hydrant Locations
- 12 b Blue Dot Hydrant Marker Location

BUILDING INFORMATION AND DATA

PLAN DESCRIPTION	STORIES	OCCUPANCY TYPE	CONSTRUCTION TYPE	AUTOMATIC FIRE SPRINKLERS	SQUARE FOOTAGE
BUILDING PLAN #1	1	R-3	V-B	NFPA 13D	1,848 SF
BUILDING PLAN #1X	2	R-3	V-B	NFPA 13D	2,482 SF
BUILDING PLAN #2	1	R-3	V-B	NFPA 13D	1,917 SF
BUILDING PLAN #2X	2	R-3	V-B	NFPA 13D	2,742 SF
BUILDING PLAN #3	2	R-3	V-B	NFPA 13D	2,873 SF

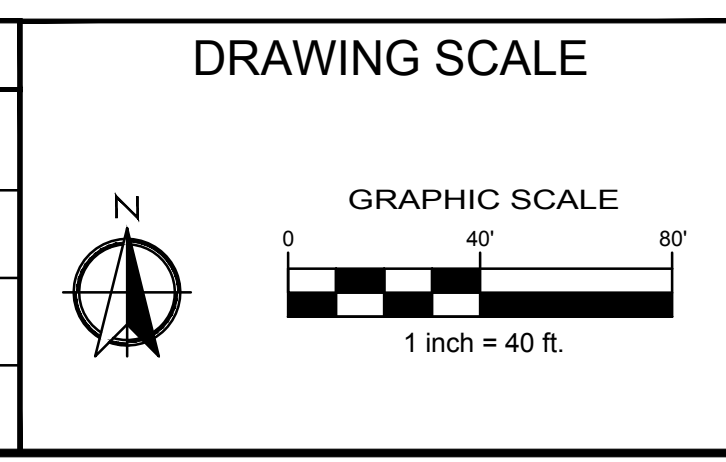
MIN. FIRE FLOW AND FIRE HYDRANT SPACING REQUIREMENTS

MINIMUM FIRE FLOW OF 1,000 GPM AT 20PSI FOR 1 HOUR REQUIRED PER THE LARGEST BUILDING OF APPROXIMATELY 2,873 SQ. FT. AND TYPE V-B CONSTRUCTION. A MINIMUM OF FIVE (5) FIRE HYDRANTS ARE REQUIRED SPACED NO MORE THAN 600 FEET FROM HYDRANT TO HYDRANT, NO MORE THAN 300 FEET FROM ANY BUILDING, AND NO MORE THAN 250 FEET FROM THE END OF A DEAD-END FIRE ACCESS ROAD.

FIRE FLOW TEST REQUIREMENT

NOTE: A FIRE FLOW MODELING CALCULATION AND FIRE FLOW TEST SHALL BE COMPLETED AND OBTAINED FROM THE SANTA MARGARITA WATER DISTRICT PRIOR TO LUMBER DROP INSPECTION. THE FIRE FLOW TEST SHALL INDICATE THE FLOW AT 20 PSI, AND SHALL BE PROVIDED TO OCFA PRIOR TO SCHEDULING THE LUMBER DROP INSPECTION.

NO.	DATE	REVISIONS
1		
2		
3		
4		



CIVIL ENGINEER:

H & A HUNSAKER & ASSOCIATES
IRVINE, INC
3 HUGHES
IRVINE, CA 92618
(949) 583-1010

ARCHITECTURE/PLANNING:

ARCHITECTS - PLANNERS - DESIGNERS
WHA.
680 NEWPORT CENTER DRIVE, SUITE 300
NEWPORT BEACH, CA 92660

PREPARED BY:

firesafe PLANNING, INC.
28506 AIROSO STREET
RANCHO MISSION VIEJO, CA 92694
(949) 240-6911

PREPARED FOR:

PulteGroup
27401 LOS ALTOS, STE. 400
MISSION VIEJO, CA 92691
(949) 330-8511

PREPARED FOR:

RMV PA3 DEVELOPMENT, LLC
28811 ORTEGA HIGHWAY
SAN JUAN CAPISTRANO, CA 92675
(949) 240-3363

TITLE: **FIRE MASTER PLAN RANCHO MISSION VIEJO RIENDA PA 3.4 AQ42 VTMM 19309 OCFA SR 544569**

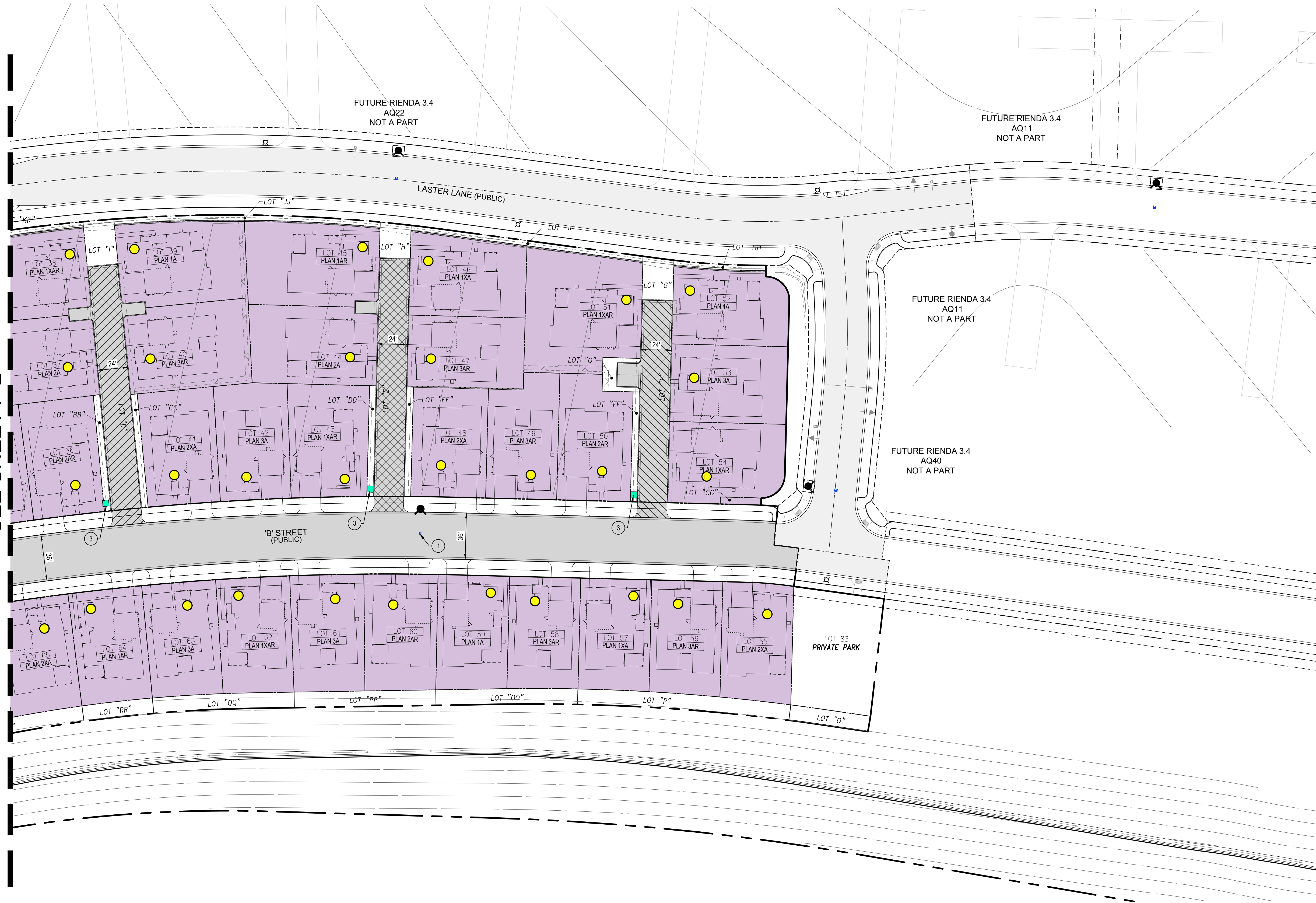
DATE: 04/23/2024

SHEET: **F-2**

ORANGE COUNTY FIRE AUTHORITY

The use of these plans and specifications shall be restricted to the original site for which they were prepared and publication thereof is expressly limited to such use. Reproduction, publication, or re-use by any method, in whole or in part without the express consent of FIRESAFE PLANNING SOLUTIONS is prohibited.

SEE SHEET F-2



LEGEND

- EXISTING FIRE HYDRANT PER PREVIOUSLY APPROVED BACKBONE FIRE MASTER PLAN SR542339
- PROPOSED PUBLIC FIRE HYDRANT WITH BLUE REFLECTIVE FIRE HYDRANT MARKER. MARKER SHALL BE PLACED 6' FROM CENTERLINE OF STREET
- 4" MIN. UNIT ADDRESSING (SEE ARCHITECTURAL PLAN FOR FINAL DESIGN AND LOCATIONS)
- 300' HOSE PULL DISTANCE - FOR SINGLE FAMILY BUILDING TO THE FRONT DOOR
- PAINT CURB RED WITH 'NO PARKING FIRE LANE' STENCIL AT 30' O.C. PER DETAILS HEREON AND OCFA GUIDELINE B-01
- INDICATES 'FIRE LANE-NO PARKING' SIGN PER DETAILS HEREON ON AND THE RFPFP
- WAYFINDING ADDRESS LOCATIONS (FINAL LOCATIONS BY OTHERS)
- PROPOSED FIRE ACCESS ROAD WITH ALL-WEATHER PAVED SURFACE DESIGNED, AT A MINIMUM, TO THE AASHTO H-20 STANDARD PER THE RFPFP
- EXISTING FIRE ACCESS ROAD
- NOT A PART OF FIRE ACCESS BUT DRIVE WILL BE CONSTRUCTED WITH ALL-WEATHER PAVED SURFACE DESIGNED, AT A MINIMUM, TO THE AASHTO H-20 STANDARD PER THE RFPFP
- INDICATES PROPOSED STRUCTURES MEETING THE 2022 CALIFORNIA RESIDENTIAL CODE SECTION R337
- INDICATES FIRE APPARATUS TURNING RADIUS: 20' WIDE PATH WITH 17' INSIDE AND 30' OUTSIDE

CONSTRUCTION NOTES

1. INSTALL FIRE HYDRANT MARKER THAT SHALL BE PLACED 6' FROM CENTERLINE OF STREET.
2. INSTALL RED PAINTED CURB PER DETAILS ON SHEET F-3.
3. INSTALL 'FIRE LANE-NO PARKING' SIGN PER DETAILS ON SHEET F-3.
4. INSTALL WAYFINDING ADDRESS SIGN WITH 3" MINIMUM FONT PER DETAIL ON SHEET F-3. APPROXIMATE LOCATIONS SHOWN; FINAL LOCATIONS BY OTHERS.

RANCH FIRE PROTECTION PROGRAM ATTACHMENTS

Ranch Plan Fire Protection Program was approved by Orange County Fire Authority and Orange County Board of Supervisors dated: July 31, 2007 and Amendment No. 1, dated: March 25, 2013; Amendment No. 2, dated: August 14, 2014 and Amendment No. 3, dated: March 31, 2022.

- Attachments used with this submittal:
- 3bFire Lane No Parking Signs
 - 3cBegin / End Fire Lane Signs
 - 3gEnd of Fire Lane Identification
 - 3hWay Finding Signage for Paseo Addresses
 - 3iMounting Specifications for Fire Lane Signs and No Parking Signs
 - 6 aRed Curb
 - 6 bStreet Widths
 - 10Hydrant Distribution Table
 - 11Fire Flow Requirement Table
 - 12 aFire Hydrant Locations
 - 12 bBlue Dot Hydrant Marker Location

BUILDING INFORMATION AND DATA

PLAN DESCRIPTION	STORIES	OCCUPANCY TYPE	CONSTRUCTION TYPE	AUTOMATIC FIRE SPRINKLERS	SQUARE FOOTAGE
BUILDING PLAN #1	1	R-3	V-B	NFPA 13D	1,848 SF
BUILDING PLAN #1X	2	R-3	V-B	NFPA 13D	2,482 SF
BUILDING PLAN #2	1	R-3	V-B	NFPA 13D	1,917 SF
BUILDING PLAN #2X	2	R-3	V-B	NFPA 13D	2,742 SF
BUILDING PLAN #3	2	R-3	V-B	NFPA 13D	2,873 SF

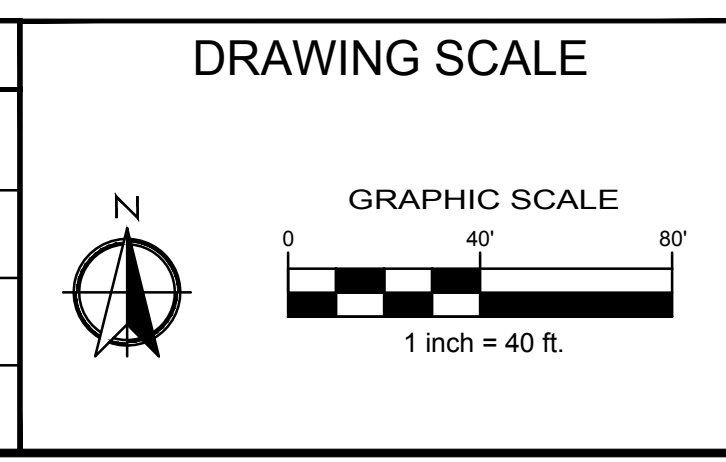
MIN. FIRE FLOW AND FIRE HYDRANT SPACING REQUIREMENTS

MINIMUM FIRE FLOW OF 1,000 GPM AT 20PSI FOR 1 HOUR REQUIRED PER THE LARGEST BUILDING OF APPROXIMATELY 2,873 SQ.FT. AND TYPE V-B CONSTRUCTION. A MINIMUM OF FIVE (5) FIRE HYDRANTS ARE REQUIRED SPACED NO MORE THAN 600- FEET FROM HYDRANT TO HYDRANT, NO MORE THAN 300- FEET FROM ANY BUILDING, AND NO MORE THAN 250- FEET FROM THE END OF A DEAD-END FIRE ACCESS ROAD.

FIRE FLOW TEST REQUIREMENT

NOTE: A FIRE FLOW MODELING CALCULATION AND FIRE FLOW TEST SHALL BE COMPLETED AND OBTAINED FROM THE SANTA MARGARITA WATER DISTRICT PRIOR TO LUMBER DROP INSPECTION. THE FIRE FLOW TEST SHALL INDICATE THE FLOW AT 20 PSI, AND SHALL BE PROVIDED TO OCFA PRIOR TO SCHEDULING THE LUMBER DROP INSPECTION.

NO.	DATE	REVISIONS
1		
2		
3		
4		



CIVIL ENGINEER:

H & A HUNSAKER & ASSOCIATES
IRVINE, INC
3 HUGHES
IRVINE, CA 92618
(949) 583-1010

ARCHITECTURE/PLANNING:

WHA
ARCHITECTS - PLANNERS - DESIGNERS
680 NEWPORT CENTER DRIVE, SUITE 300
NEWPORT BEACH, CA 92660

PREPARED BY:

firesafe PLANNING, INC.
28506 AIROSO STREET
RANCHO MISSION VIEJO, CA 92694
(949) 240-5911

PREPARED FOR:

PulteGroup
27401 LOS ALTOS, STE. 400
MISSION VIEJO, CA 92691
(949) 330-8511

PREPARED FOR:

RMV PA3 DEVELOPMENT, LLC
28811 ORTEGA HIGHWAY
SAN JUAN CAPISTRANO, CA 92675
(949) 240-3363

TITLE: **FIRE MASTER PLAN RANCHO MISSION VIEJO RIENDA PA 3.4 AQ42 VTTM 19309 OCFA SR 544569**

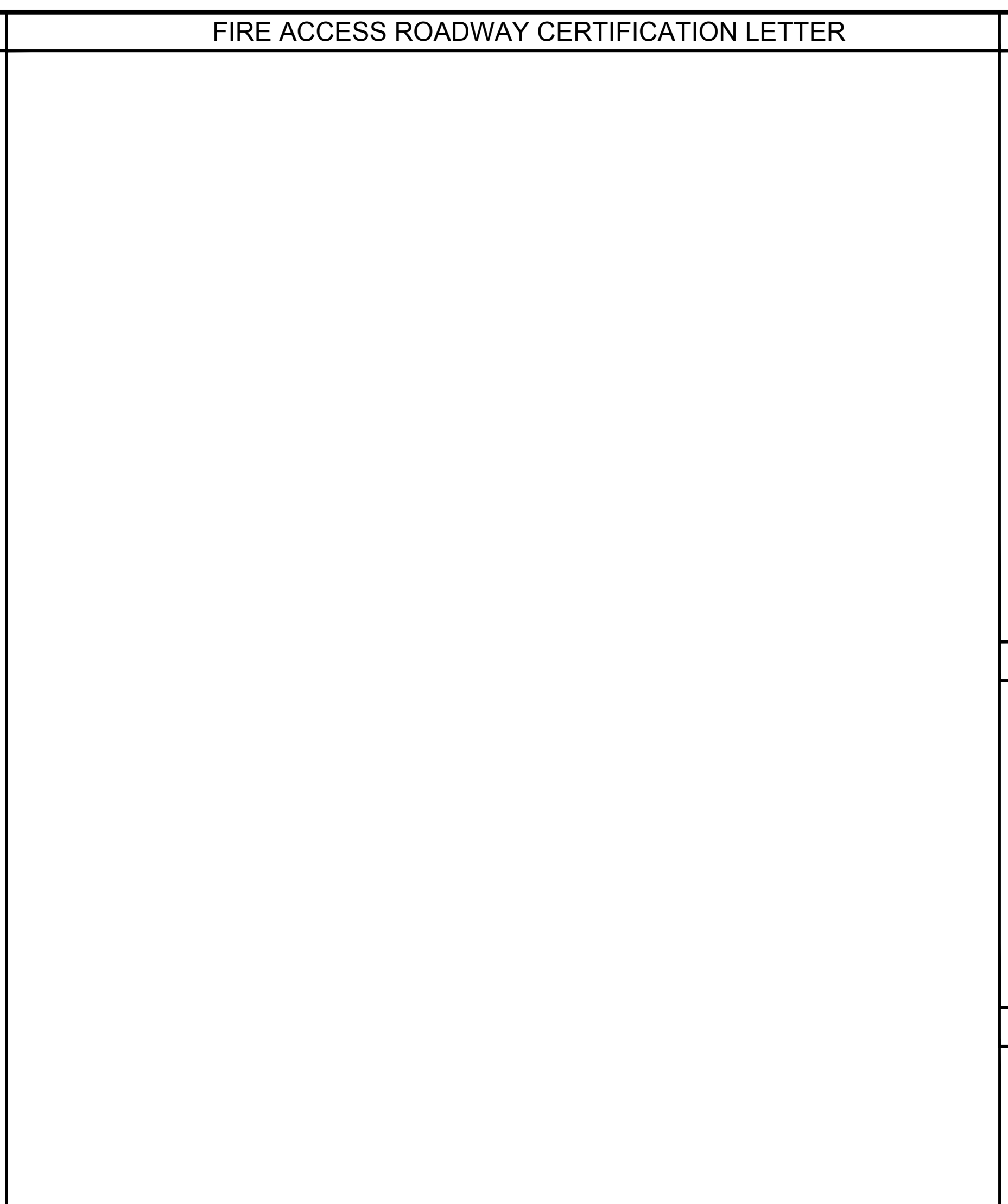
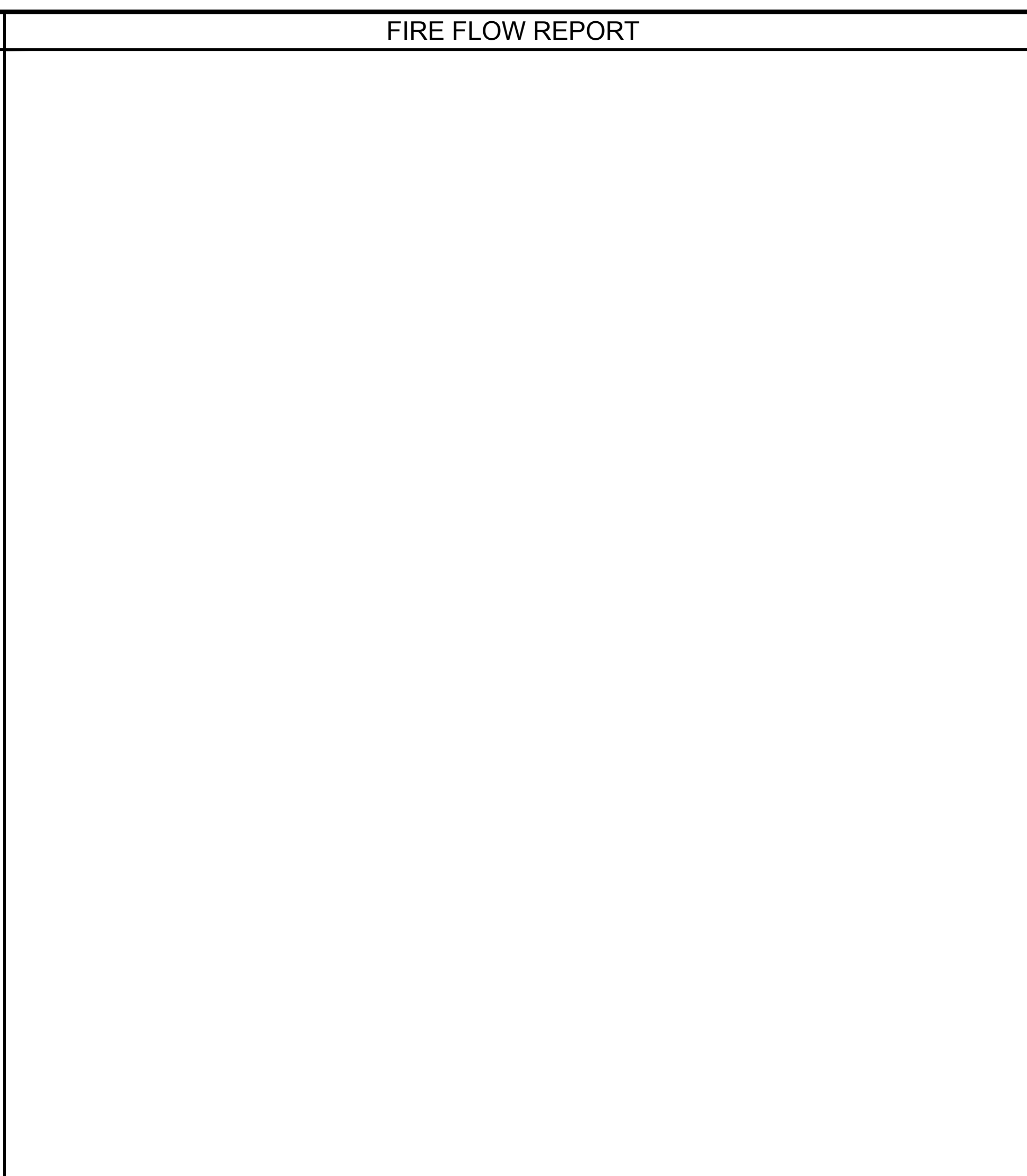
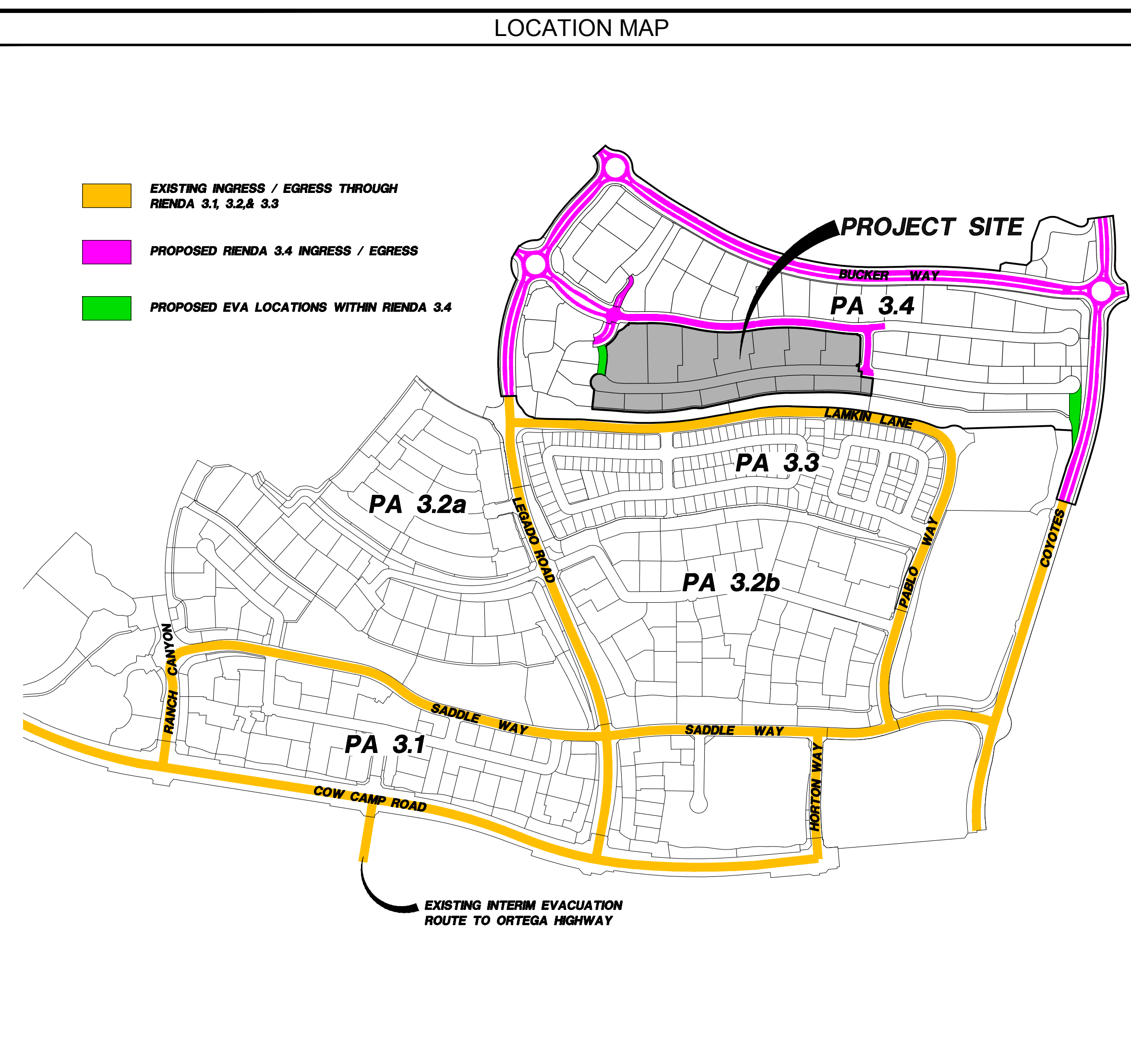
DATE: 04/23/2024

SHEET: **F-2**

ORANGE COUNTY FIRE AUTHORITY

3 OF 4

The use of these plans and specifications shall be restricted to the original site for which they were prepared and publication thereof is expressly limited to such use. Reproduction, publication, or re-use by any method, in whole or in part without the express consent of FIRESAFE PLANNING SOLUTIONS is prohibited.



PARKING ENFORCEMENT LETTER

APRIL 23, 2024

PLANNING AND DEVELOPMENT SERVICES SECTION
ORANGE COUNTY FIRE AUTHORITY
1 FIRE AUTHORITY ROAD
IRVINE, CA 92602

RE: RIENDA PA3.4 AQ42 FIRE MASTER PLAN, VESTING TENTATIVE TRACT NO. 19309, RANCHO MISSION VIEJO, COUNTY OF ORANGE, CA. OCFA SERVICE REQUEST NUMBER 544569 PARKING ENFORCEMENT PLAN

THE FIRE LANE PARKING ENFORCEMENT PLAN FOR THE ABOVE REFERENCED PROJECT IS STATED AS FOLLOWS:

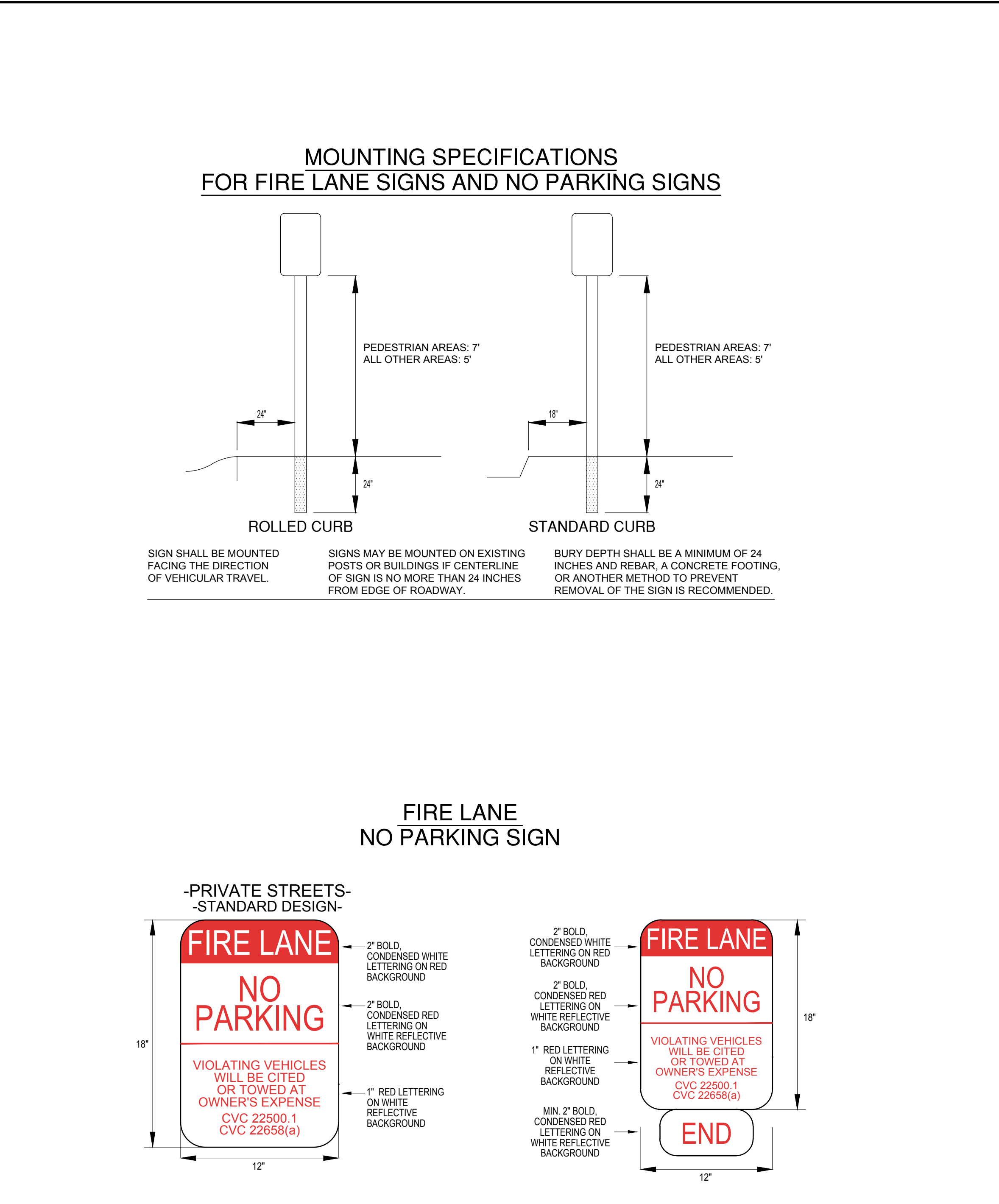
ALL FIRE LANES WITHIN PROJECT SHALL BE MAINTAINED AND IN NO EVENT SHALL PARKING BE PERMITTED ALONG ANY PORTION OF A STREET OR DRIVE THAT REQUIRED FIRE LANES OR ANY AREA DESIGNATED AS A FIRE LANE FOR TURN-AROUND OR DRIVE THROUGH PURPOSES.

PROJECT HOMEOWNER'S ASSOCIATION SHALL ADOPT REASONABLE RULES AND REGULATIONS REGARDING THE PARKING OF VEHICLES ALONG THE STREETS, ROADS AND OR DRIVES WITHIN THE PROJECT THAT ARE NOT IN CONFLICT WITH APPLICABLE LAW.

IN FURTHERANCE THEREOF, PROJECT HOMEOWNER'S ASSOCIATION, THROUGH ITS OFFICERS, COMMITTEES AND AGENTS WILL ESTABLISH THE "PARKING" AND "NO PARKING" AREAS WITHIN THE PROPERTY IN ACCORDANCE WITH SECTION 22658.2 OF THE CALIFORNIA VEHICLE CODE AND THE RANCHO FIRE PROTECTION PROGRAM. THE LAW SHALL BE ENFORCED THROUGH SUCH RULES AND REGULATIONS BY ALL LAWFUL MEANS, INCLUDING, WRITTEN WARNINGS, CITING, LEVYING FINES AND TOWING VEHICLES IN VIOLATION.

PROJECT HOMEOWNER'S ASSOCIATION WILL CONTRACT WITH A CERTIFIED PATROL AND TOWING COMPANY TO REMOVE VEHICLES THAT VIOLATE NO PARKING RESTRICTIONS. FIRST TIME VIOLATORS WILL RECEIVE A WRITTEN WARNING AND WITH SUBSEQUENT VIOLATIONS, THE VEHICLE SHALL BE SUBJECT TO TOWING. THE VEHICLE OWNER SHALL BE RESPONSIBLE FOR ALL COSTS INCURRED IN REMEDYING SUCH VIOLATION, INCLUDING WITHOUT LIMITATION TOWING COST, CITATIONS AND LEGAL FEES.

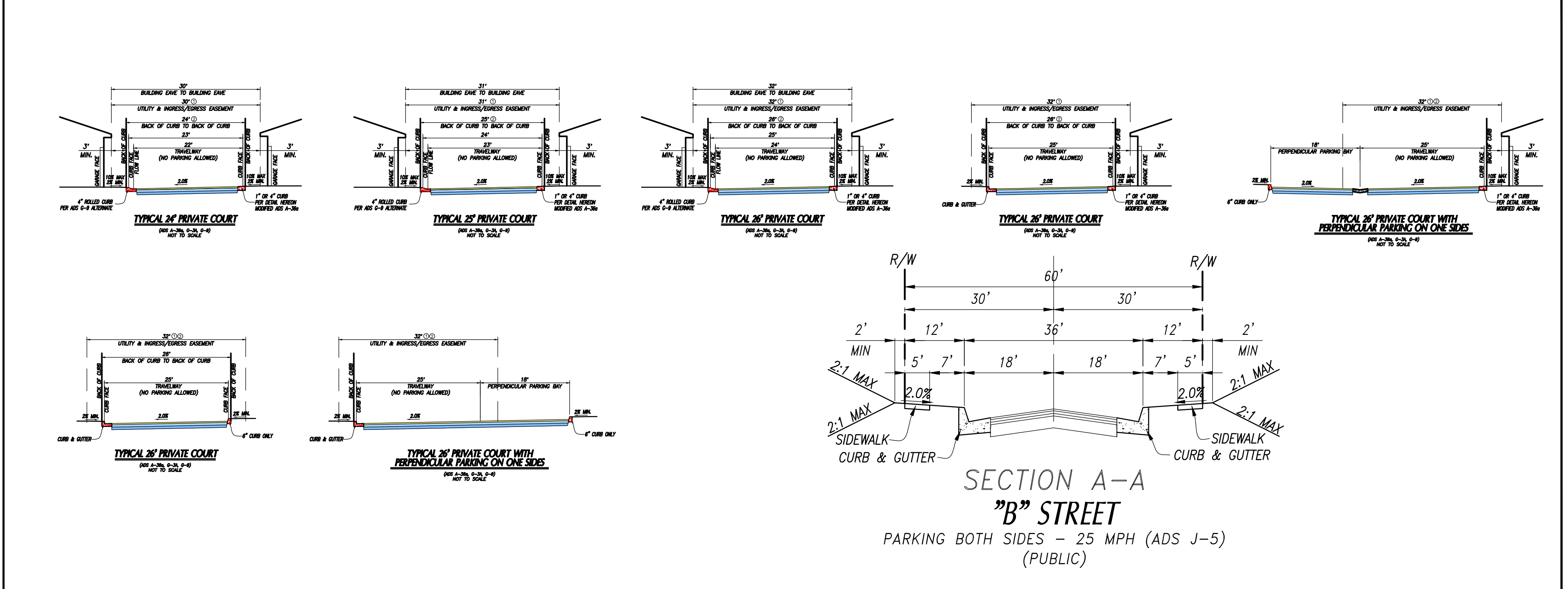
FIRE LANE PARKING SIGN DETAILS



ELEVATIONS



STREET SECTIONS



COMBUSTIBLE CONSTRUCTION LETTER

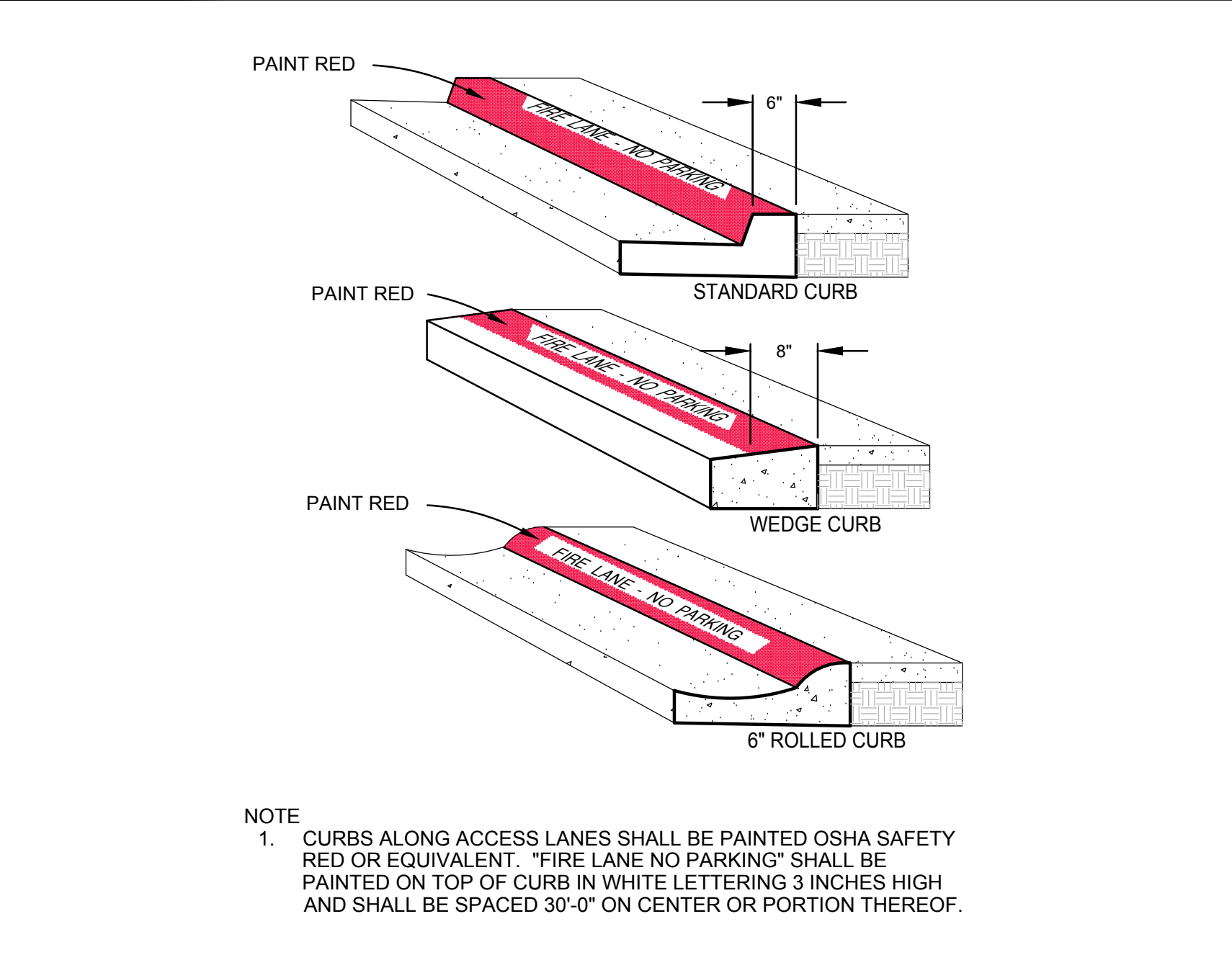
APRIL 23, 2024

ORANGE COUNTY FIRE AUTHORITY
1 FIRE AUTHORITY ROAD
IRVINE, CA 92602-0125

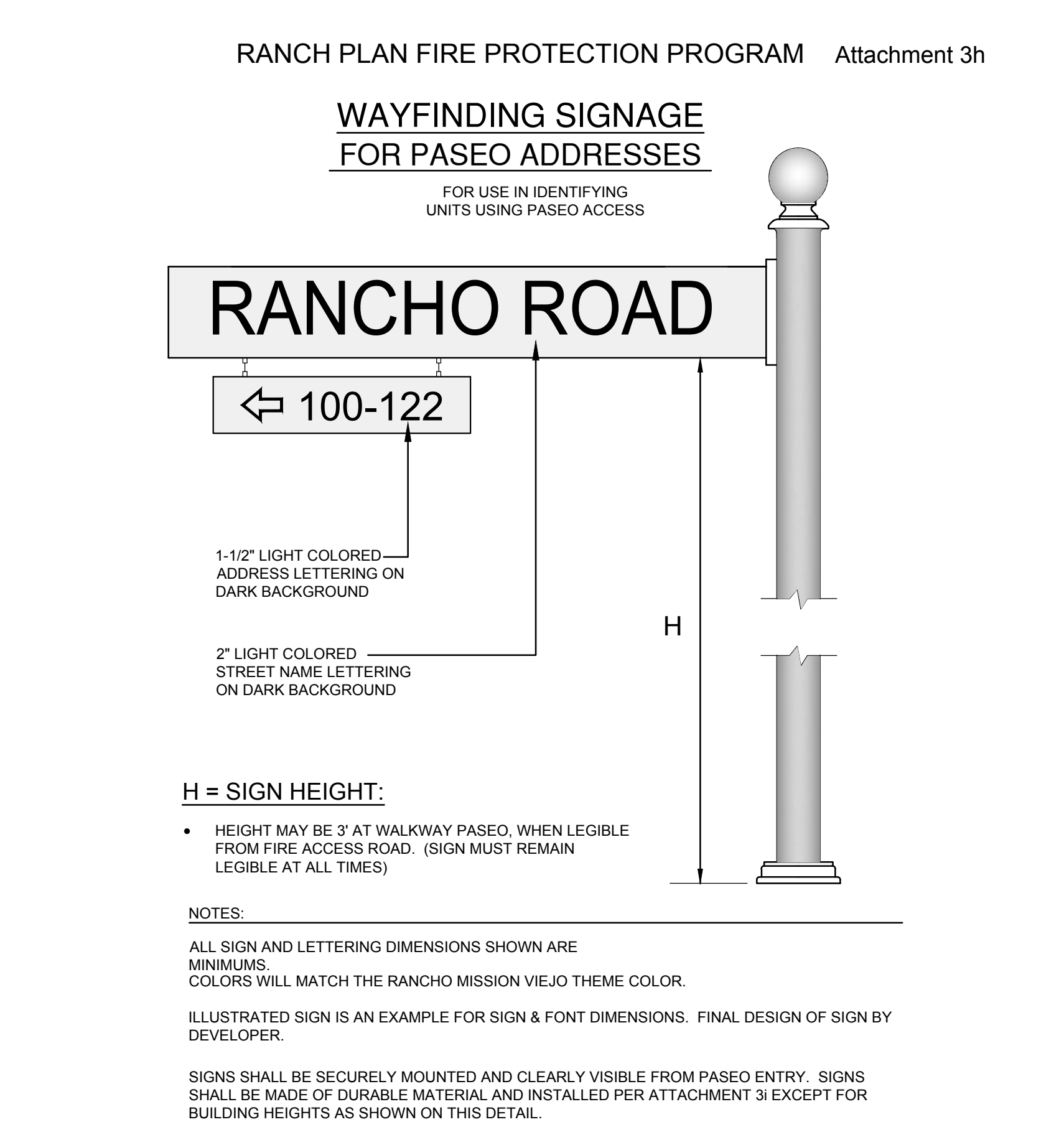
SUBJECT: COMBUSTIBLE CONSTRUCTION LETTER, RIENDA PA3.4 AQ42 FIRE MASTER PLAN - OCFA S.R. 544569 RANCHO MISSION VIEJO, COUNTY OF ORANGE

THE PURPOSE OF THIS LETTER IS TO NOTIFY YOU THAT THIS PROJECT SHALL INSTALL ALL REQUIRED PAVED FIRE ACCESS ROADS THAT MEET O.C.F.A. GUIDELINES PER THE APPROVED PLANS. ALL FIRE HYDRANTS AND WATER SUPPLY FOR FIREFIGHTING PURPOSES SHALL BE INSTALLED PER THE APPROVED PLANS AND SHALL MEET ALL FIRE FLOW REQUIREMENTS, PRIOR TO ANY COMBUSTIBLE CONSTRUCTION MATERIALS BEING DELIVERED FOR CONSTRUCTION.

FIRE LINE RED CURB DETAILS



① WAYFINDING SIGNAGE



NO.	DATE	REVISIONS
1		
2		
3		
4		

CIVIL ENGINEER:

H & A HUNSAKER & ASSOCIATES
IRVINE, INC
3 HUGHES
IRVINE, CA 92618
(949) 583-1010

ARCHITECTURE/PLANNING:
ARCHITECTS - PLANNERS - DESIGNERS

WHA.
680 NEWPORT CENTER DRIVE, SUITE 300
NEWPORT BEACH, CA 92660

PREPARED BY:

firesafe
PLANNING, INC.

28506 AIROSO STREET
RANCHO MISSION VIEJO, CA 92694
(949) 240-5911

PREPARED FOR:

PulteGroup

27401 LOS ALTOS, STE. 400
MISSION VIEJO, CA 92691
(949) 330-8511

PREPARED FOR:

RMV PA3 DEVELOPMENT, LLC

28811 ORTEGA HIGHWAY
SAN JUAN CAPISTRANO, CA 92675
(949) 240-3363

TITLE:

**FIRE MASTER PLAN
RANCHO MISSION VIEJO
RIENDA PA 3.4
AQ42 VTMM 19309
OCFA SR 544569**

ORANGE COUNTY FIRE AUTHORITY

DATE: 04/23/2024

SHEET: **F-4**

4 OF 4

The use of these plans and specifications shall be restricted to the original site for which they were prepared and publication thereof is expressly limited to such use. Reproduction, publication, or re-use by any method, in whole or in part without the express consent of FIRESAFE PLANNING SOLUTIONS is prohibited.